

# Contents

## Cache Master

What will Cache Master do?

Software Versions

What's New In The Windows 95 Version?

What Are "Folders" & "Objects"?

Key Features

Windows 3.x Setup & Installation

Windows 95 Setup & Installation

The Database

Off-line Browsing

Netscape Navigator Browser

Right Mouse Button Support

Getting Started!

"FILE" Menu

"SETTINGS" Menu

"OPTIONS" Menu

"INTERNET" Menu

Short-Cut Keys

The ICONS

Known Problems

Downloading The Software

How To Register The Program

LICENSE AGREEMENT

# What will Cache Master do?

The Cache Master is a tool for managing and organizing Internet documents and picture images in a database. Cache Master can use information stored in its database to view HTML documents, complete with inline graphics, in an off-line setting. The ability to manage HTML documents and picture/graphic files is very useful in today's World Wide Web (WWW) environment. There are so many Internet addresses that it is very hard to manage them in a form that makes you productive.

As the Internet browser's cache directory is processed, Cache Master replaces actual Internet links with the names of local files. Viewing HTML documents from the Internet in an off-line setting is very useful when the art work appears as though you were viewing the documents on-line.

Turning on the "Auto Copy" option allows you to capture everything you copy to the clipboard. In this manner, Cache Master can add Internet addresses, text from word processors, bitmap images, and other such information to the database. In this manner, it works much like a bookmark except that the information is stored in a database rather than an text file.

Cache Master allows the management of (but not limited to) the following:

- HTML documents
- Internet addresses
- Picture/graphic images (gif, jpg, tiff, bmp, etc.)
- Window's INI files
- Ascii files (.txt, autoexec.bat, config.sys, etc.) - not file name/type specific
- Internet News Group Addresses
- Mailto Addresses
- Telnet Addresses
- Gopher Addresses

Cache Master allows the HTML document developer to categorize objects or items by title. Once you travel through the internet looking at homepages, all of the HTML documents and the images within those documents can be stored and viewed by using Cache Master.

Cache Master allows you to search for any text in the object list or title list, object content, Internet addresses, and even text within ascii files. This feature is good when you are searching for text in a file but your not sure what file it might be located in. This works well with HTML documents.

## Software Versions

This help file serves as the documentation for the following Cache Master releases:

- ◆ Version 2.16 (Windows 3.x)
- ◆ Version 1.0b1 (Windows 95)

The software and documentation are constantly being updated. Be sure to visit the Off-Site Labs WEB page at <http://www.neosoft.com/~osl> for update information.

## **What's New In The Windows 95 Version?**

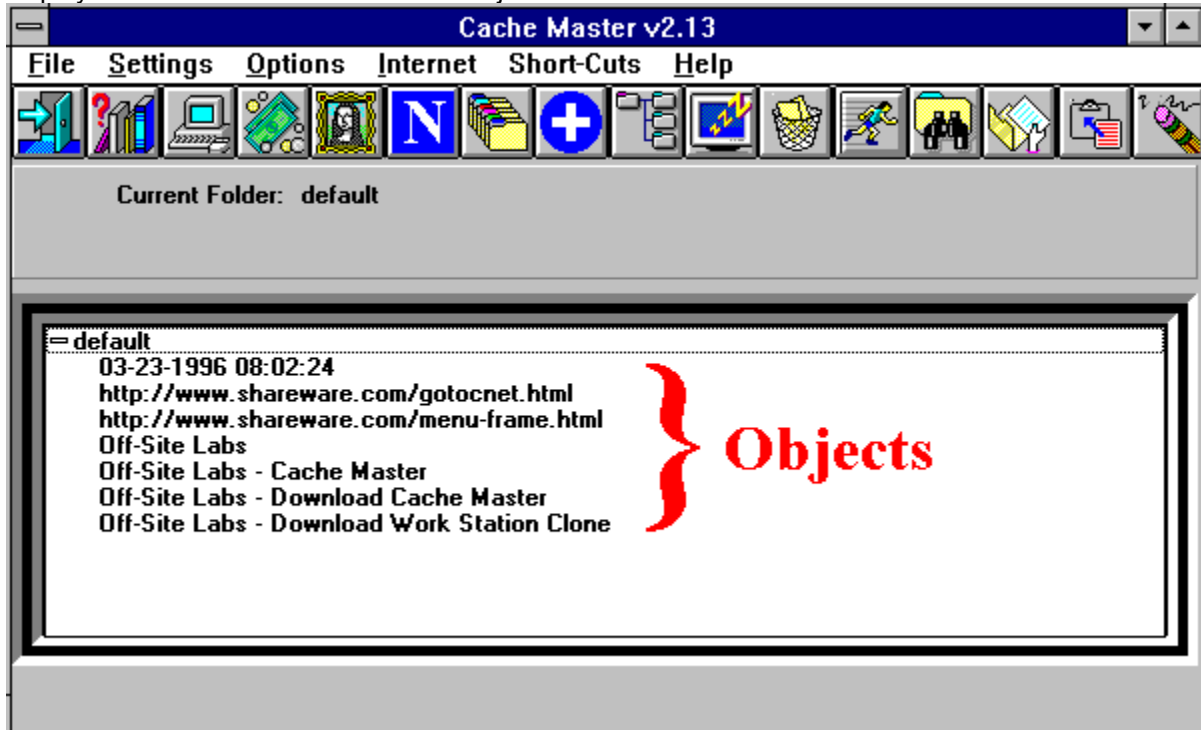
The main visual difference is in the object display area. Cache Master 95 uses tabs to display processed cache file objects as well as miscellaneous file names. Clicking on the different tabs allows you to quickly change from one display to another. Most of the functionality is the same in both the Windows 3.x and Windows 95 versions.

The Windows 95 version does not need or require the use of MOZOCK.DLL for off-line viewing of your HTML documents or graphic images. The winsock.dll needed to be loaded will work for the off-line environment as well as the on-line environment.

Every attempt is made to make both the Windows 3.x and Windows 95 versions contain the same functionality. There will be differences and those differences will be documented here.

## What Are "Folders" & "Objects"?

Cache Master uses "folders" to store objects/items. New folders can be added to the object list by clicking on the "folders" icon. The term "objects" are nothing more than items available for you to browse, edit, or delete. They appear in the main viewing area. The following Windows 3.x panel displays the folder "default" with seven objects:



## Key Features

- ◆ Management tool for HTML documents and graphic images.
- ◆ Drag & Drop objects.
- ◆ Interface to Internet search engines.
- ◆ Right mouse button support.
- ◆ HTML documents are updated by retrieving new copies from the source location.
- ◆ Search for text in 1) object list, 2) Internet addresses, 3) files.
- ◆ Load/Unload MOZOCK.DLL on the fly for off-line browsing.
- ◆ Support for large file lists. Good for cataloging entire file systems.
- ◆ Capture any clipboard object into database.
- ◆ Capture screen shots into files.
- ◆ Manage files, such as Windows INI files.
- ◆ Categorize files into folders.
- ◆ Copy URL address from any browser to the database.
- ◆ Paste URL address from the database to any browser.
- ◆ Maximize performance by using the Netscape Navigator browser.
- ◆ Create "Quick HTML" documents from database information.
- ◆ User defined software to look at graphic image files.
- ◆ Allows the use multiple databases (only for registered users).
- ◆ Easy editing of files.
- ◆ Share databases with friends and co-workers.
- ◆ Organize files and text information.
- ◆ Allows local file names to be added to the database.
- ◆ Can be used to view HTML documents off-line complete with inline graphic images.
- ◆ Quickly switch between local and Internet addresses (for on-line use).

# Windows 3.x Setup & Installation

**IMPORTANT NOTE:** Cache Master requires the use of **SHARE.EXE**. This file is loaded in the AUTOEXEC.BAT file. The absence of this file will not allow database usage which is important to the functionality of the software.

The installation program will setup the program in a directory that you specify. The default directory is "C:\CM". You will be prompted for the source and target directories. The Windows directory is not affected by the installation of Cache Master. All files, including the INI file, are placed in the target installation directory.

The setup/installation program will check the WIN.INI file for the presence of Netscape. If Netscape is in the WIN.INI file, the directory location will be used and placed in Cache Master's INI file. If "netscape.exe" cannot be located, the INI will not reflect the use of an Internet browser. The Netscape Navigator is the only supported browser at the current time. Other browsers can be used by using the clipboard to cut and paste information.

**Registered Users:** The installation program can determine if an older version of CM.INI exists. If the file already exists, you will be prompted to overlay the old copy with a new copy. If you overlay the file, the registration information will be erased and it will have to be entered again.

## **Windows 95 Setup & Installation**

The Cache Master package should be unzipped into a temporary directory. Run SETUP.EXE to install Cache Master on your system. Some of the files (DLLs and OCXs) will be copied to the WINDOWS\SYSTEM directory and others will be copied to the installation directory.

Once installed, Cache Master will be setup and ready to run. A default database will be created for your use.



# The Database

**NOTE: Cache Master v2.x (Windows 3.x) has a new database format that is incompatible with earlier versions! The Windows 95 and Windows 3.x databases are incompatible with each other.**

Cache Master does not require you to select a database or an Internet Browser. A default database will be created the first time you run the program. The database makes it easy to manage topics of interest. These topics (referred to as "objects") can be Internet addresses, HTML documents and other ascii text files (ex: Windows' INI files, .bat, .sys, .txt, etc.).

## ***Windows 3.x***

The database is based upon Microsoft Access v1.1 database engine. You are not required to purchase MS Access to run this application. The installation kit contains the necessary components to install and run Cache Master. There are two library files required: MSAJT110.DLL & MSAES110.DLL.

There is also a couple of Visual Basic libraries required. They are VBRUN300.DLL & VBDB300.DLL. The VBRUN300.DLL file is not supplied as a part of the installation. It can be downloaded from any number of sites.

## ***Windows 95***

The database is based upon Microsoft Access v7.0 database engine. You are not required to purchase MS Access to run this application. The installation kit contains the necessary components to install and run Cache Master.

# Off-line Browsing

## ***Windows 3.x***

One of the key reasons to use Cache Master is the ability to rewrite the HTML documents so that you can view them offline. Applications that communicate with the Internet do so by using a library file called "winsock.dll". For offline browsing, you will need to trick the Netscape Navigator into thinking it's really connected to a network. This is done by getting a copy of "mozock.dll". This library file is unsupported software but it works very nicely.

Refer to "FILE/Select Mozock" menu option for more information about loading the library file automatically.

If you need to obtain a copy of "mozock.dll", you can download a copy from the internet at "<ftp://ftp.netscape.com/unsupported/windows/mozock.dll>".

## ***Windows 95***

Windows 95 utilizes its own version of winsock.dll that is available for use in both the online and off-line environments. This makes it easy for you to use your Internet browser to view html documents off-line. Double click on your browser and your ready to go.

# Netscape Navigator Browser

Cache Master has been designed to work with the Netscape browser. Everything you view in the browser can be saved to disk on your local file system. This is called "file cache". Netscape checks the cache directory to see if the file already exists on the local file system first. If the file does not exist, then the file (HTML, GIF, JPEG, etc.) is retrieved from the source location on the Internet.

- Cache Master utilizes the cache directory to rewrite the HTML documents. The actual graphic image file addresses are replaced with a local file name. This local file name is referenced in a database.

**Be sure to set the option in the Netscape browser to load a blank page. If you don't do this, you may have problems passing information to Netscape from Cache Master.**

# Right Mouse Button Support

Starting with v2.13, several options are available with the click of the right mouse button:

- ⇒ View Object Item
- ⇒ Run Application
- ⇒ Delete Item
- ⇒ Condense Folders
- ⇒ Expand Folders
- ⇒ Clear Clipboard
- ⇒ Post Item To Clipboard
- ⇒ Move Folder Objects To Other Folders (Windows 3.x)
- ⇒ Clear File List (Windows 95)

To use the right mouse button function, click on the object and then click the right mouse button. You will be presented with a list of options to select from.

# Getting Started!

Use the following if you need a "cookbook" approach to start using Cache Master. These steps will help you in defining the required information and get you on your way to exploring the functionality of the software.

Cache Master uses a term called "objects". These objects appear in the main viewing area below the icon bar. Objects are nothing more than entries in the viewing area. They can be files, e-mail addresses, telnet addresses, http and ftp addresses, file names, and of course miscellaneous text.

1. If you want to use Cache Master without the features designed for Internet use, skip to step 10.
2. **BROWSER SELECTION:** If you want Cache Master to communicate with the Internet browser, you must first define or locate the browser. This is done by selecting "FILE/SELECT BROWSER" from the menu bar. Once you have located the browser's executable file, you will be prompted for the cache file directory. Cache Master will make an attempt to locate this directory on its own. If it fails, you will need to select the proper directory.
3. **MOZOCK.DLL (Windows 3.x):** If are using Cache Master with Windows 3.x, you will need to obtain MOZOCK.DLL for off-line viewing of your browser's cache files. Once you have it downloaded to your system, select "FILE/SELECT MOCK" from the menu bar and locate the correct directory for the file. This file can be located in any directory you want. **Be sure to set the option in the Netscape browser to load a blank page. If you don't do this, you may have problems passing information to Netscape from Cache Master.**
4. **PROCESSING BROWSER CACHE:** Now that you have selected the browser, you are ready to process the cache directory and put information into the database. You will be prompted for a date to process. This date selection is used so that you can process files past a certain date and time. Another option is whether or not you want to duplicate cache or not. Select "NO" at this time. You can duplicate cache later.
5. After processing the cache directory, you should have one object in the object list area. The object should have a "plus" sign on the left to signify that it is a folder. Click on the "plus" sign and you can expand the folder list to see the items attached to it. The objects you see should be the HTML documents you previously processed from the cache directory.
6. **DRAG & DROP:** Several of the icons allow you to drag and drop objects on them to perform a specific task. These icons include the browser (Netscape "N"), the trash can, and create new file.
7. If you want to view the HTML documents from within your browser, drag & drop the object onto the Cache Master's browser icon ("N"). The browser will load and should display the desired file.
8. **QUICK HTML:** Another way to quickly view the documents is to select "INTERNET/QUICK HTML" from the menu bar. This option will perform a lookup in the database, build a file with links to all HTML documents that it has processed from the cache directory and pass this information to the browser for viewing.
9. Click on the blue cross icon. This will add an entry with the date and time as the title. Double click on this item and you will be presented with a form to make changes to the data.
10. Click and hold on the object just created in step 9. Then drag and drop it on the trash can icon. This will delete the item from the list.

11. To delete an entire folder, click on the folder and then click on the trash can icon.
12. Move the mouse to the object area and click the right mouse button. You will see several options available. These selections will perform the same functions of those in the menu and icon bars.
13. If you want to purge the database, you can select "FILE/PURGE DATABASE" at any time. This will cause all objects (folders and objects within each folders) to be removed from the database.

# **"FILE" Menu**

New Database

Select Database

Purge Database - Leave Files

Purge Database - Delete Files

Select Browser

Select Graphics

Select Mozock (Windows 3.x)

Select Cache Directory

Reports

## **New Database**

This option will allow you to create a new database. You will be prompted to the new file name to be used. If it doesn't exist, then it will be created from a default database. The unregistered software will not allow the use of multiple databases.



## **Select Database**

This option prompts you to select an existing Cache Master database. Locate the file by selecting drive, directory and file name. The unregistered software will not allow the use of multiple databases.

## **Purge Database - Leave Files**

This feature allows you to clear the entire database of all object entries. No files will be erased from disk.

## **Purge Database - Delete Files**

This feature allows you to clear the entire database of all object entries. The only files that will be deleted are the ones that Cache Master owns. These files are located in the directory where Cache Master is installed.

## Select Browser

Defining a browser to Cache Masters makes more features and icons available. Doing so will also allow you to communicate with the Internet by passing actual document addresses to the browser. When the browser program is selected, an "Internet" option appears in the menu bar as well as the following four icons become available:

1. Process Internet Browser's Cache
2. Add Graphic Images To Object List
3. User Local File With Internet Browser
4. Use Internet Address With Internet Browser

The last two are actually one icon that changes to the other each time the icon is clicked. It will toggle back and forth. These items will disappear without a selected browser.

Currently, the only supported Internet browser is the Netscape Navigator. The tested and certified versions include:

- Netscape v1.x
- Netscape v2.x
- Netscape Gold (Windows 95)
- Netscape Atlas Preview Release 2 (Windows 95)

Other versions may work with Cache Master. These versions have been tested to work with the software.

## **Select Graphics**

You may have your own graphic viewing software to display graphic files. Each time you want to display a graphic image, this software program will be used by highlighting the object and pressing the "RUNNER" icon.

## Select Mozock (Windows 3.x)

Netscape users can use an unsupported version of Winsock.dll called mozock.dll. This library is provides the necessary environment for the Netscape Navigator to run offline from any given network. You are not required to dial-up a service provider or be connected to a LAN with the use of mozock.dll. With mozock.dll you should be able to load Netscape and display local files.

If you have selected the Netscape Navigator as your browser, this option will automatically appear. The library file does not have to be in the path, simply defined as to the location of the file (mozock.dll). Once selected, it may be loaded and unloaded at will.

If the file has been defined but not loaded, it will automatically be loaded when an object is dropped on the Netscape icon. A copy of MOZOCK.DLL can be obtained from "<ftp://ftp.netscape.com/unsupported/windows/mozock.dll>".

**Be sure to set the option in the Netscape browser to load a blank page. If you don't do this, you may have problems passing information to Netscape from Cache Master.**

## **Select Cache Directory**

You must define the browser's cache directory in order to process the cache files. Due to differences in the way people set up the browser, the Cache Master will make an attempt to locate this directory. If it cannot determine where the cache files are located you will be prompted to select the directory.. Without this directory, you will not be able to process cache files into the database.

## Reports

There are three basic reports you can create by selecting this option. They are 1) Folder List, 2) Object List, and 3) WEB Pages.

- **FOLDER LIST REPORT** - This report will display all the folders by name and provide a count of items within each folder.
- **OBJECT LIST REPORT** - This report will provide you with all object titles and their content.
- **WEB PAGE REPORT** - This report will create a listing of all the HTML pages that is stored within the database. It provides the title and actual URL address. The report is sorted by the actual internet address.

The reports are displayed using NOTEPAD. If you want to print the report, use the FILE/PRINT option in NOTEPAD. The report name and the database is located at the top of each report.



# "SETTINGS" Menu

Database

Browser

Graphics

Mozock (Windows 3.x)

Cache Directory

Prompt For Folder (Adding)

Prompt For Title (Adding)

Automatic Copy From Clipboard

Maximum Folders

Maximum Items/Folder

Quick Delete

Display Database Objects (Windows 3.x)

Display File List (Windows 3.x)

Duplicate Cache (Windows 3.x)

## Database

This item will display the name of the selected database file. The database stores all Internet, text, and file information. **No Action is taken with this item, it is information only.**

## Browser

This item will display the current Internet browser. Currently, only Netscape Navigator is supported (version 1.1 and above). **No Action is taken with this item, it is information only**

## Graphics

This item will display the desired graphic viewing software. This software selection will be used each time you want to look at graphic images. **No Action is taken with this item, it is information only**

## **Mozock (Windows 3.x)**

This item will display the file name for the mozock.dll file. This software selection will be used each time you want to load the offline winsock library file (mozock.dll). **No Action is taken with this item, it is information only**

## Cache Directory

This item will display the directory name that contains the browser's cache files. This directory is used to process files and information into Cache Master's database for easy retrievals. **No Action is taken with this item, it is information only**

## **Prompt For Folder (Adding)**

This item will either be checked or unchecked. If this item is checked, you will be prompted to select a folder before adding an object to the object list.

**Windows 3.x:** This option is not available if the "Settings/Display File List" option is selected.

## **Prompt For Title (Adding)**

This item will either be checked or unchecked. If this item is checked, you will be prompted to enter the title for an object before the object is added to the list.

**Windows 3.x: This option is not available if the "Settings/Display File List" option is selected.**



## **Automatic Copy From Clipboard**

This item determines whether or not clipboard text or graphic images will automatically be copied to the object list. If this item is checked, everything copied to the clipboard will also be added to the database and object list.

This feature is useful when the supported Internet browsers are not used with Cache Master. By using the right mouse button, most browsers allow you to copy the Internet address of the document to the clipboard. Cache Master will grab that entry as soon as it appears on the clipboard and store it away for later use.

**Windows 3.x:** This option is not available if the "Settings/Display File List" option is selected.

## **Maximum Folders**

This item simply displays the maximum number of folders allowed. The unregistered software allows a limited number of folders. The registered software allows unlimited amounts of folders. If the software has been registered, this item will not appear. This number cannot be changed.

## **Maximum Items/Folder**

This item simply displays the maximum number of items allowed per folder. The unregistered software allows a limited number of entries or objects per folder. The registered software allows unlimited number of objects per folder. If the software has been registered, this item will not appear. This number cannot be changed.

## **Quick Delete**

When this option is set, items will automatically be deleted from the object list without prompting for confirmation. If the object entry is a file in the Cache Master's download directory, it too will be removed. Other files will not be deleted from disk, simply removed from the object list.

If the item is a folder, then all objects in the folder will also be deleted.

## **Display Database Objects (Windows 3.x)**

By default this option is checked. This option is always available for selection. Objects on this display are tied to the database. All functions are available when this option is set.

## **Display File List (Windows 3.x)**

This option will appear after you have used the "Local Files" icon to select files. This option allows you to switch from the default object list to the file list. Some of the functions/icons will not be available with this option set.

## **Duplicate Cache (Windows 3.x)**

Browser cache files can be copied from the browser's cache directory and stored in Cache Master's download directory. This allows file storage to be independent of the browser. This feature means that the cache files are not required once processing of the browser's cache is completed. After processing, the browser can purge its cache and it doesn't effect Cache Master's database or the HTML documents previously processed.

This option is only available if a supported browser has been defined.

# "OPTIONS" Menu

Erase Clipboard

Add Local Files

Process Browser Cache

Condense Folders

Expand Folders

Mozock.dll Loaded (Windows 3.x)



## **Erase Clipboard**

There may be times when the clipboard needs to be cleared. This option simply wipes the clipboard clean.

## **Add Local Files**

Cache Master allows you to add local files to the object list. Pick the file(s) you want, and the information about that file will be added to the database and displayed in a particular folder.

## Process Browser Cache

The amount of time needed to process the cache directory is directly related to the number of files in the browser's cache directory. Each time this icon is selected, the cache file database that Netscape keeps, has to be used to extract out the names of the cached files. The amount of time needed to process all of the cache files is relative to the size of the cache directory.

Starting with v2.1 (Windows 3.x) and v1.0 (Windows 95), cache files are processed by date and time. This allows only new files to be processed and added to Cache Master's database. Cache Master does not duplicate entries in the database or object list. As the files are processed, each cache entry is checked against the database for duplication. You will notice that the processing may slow down a bit and this is why.

If you are using a supported Internet browser, this icon will process the cache directory and add the files to the database. The browser will be closed prior to processing. This allows all files to be processed in 3 phases:

**Phase I** - Check for new cache files. The Internet URLs are being identified in the cache directory during this phase.

**Phase II** - Load the files into the database. If the duplicate cache option is set, files are copied from the browser's cache directory to Cache Master's download directory. Cache Master can determine new files that you have retrieved from the Internet and will refresh the document as well as inline images the next time this icon is selected.

**Phase III** - Rewrite the HTML documents and put the local file names in the file. This will replace the actual link in the document. This phase also updates the database with the HTML document changes.

If a document failed to load the correct picture images, revisit the HTML on the Internet and repeat this process. If you canceled the loading of a document and the graphic images didn't completely load, Cache Master will not display the graphics either. Cache Master will detect that the file is not available and will not be displayed. To correct this, reload the document from the source location and re-process the browser's cache.

This icon is only available if a supported browser has been defined.

## **Condense Folders**

This option simply collapses all folders. The display will show just the folder names without object entries.

**Windows 3.x:** This option is not available if the "Display File List" option is selected.

## **Expand Folders**

This option simply expands all folders with object entries.

**Windows 3.x:** This option is not available if the "Display File List" option is selected.

## **Mozock.dll Loaded (Windows 3.x)**

This option loads and unloads the mozock.dll library file. If another Winsock library file has been detected, a message will be displayed prompting to continue with loading the mozock.dll file. If you continue, it will be loaded. You can have a regular winsock.dll and the mozock.dll loaded at the same time.

The load order is very important. If you load mozock.dll then attempt to dial an Internet Service Provider (ISP), you will probably get an "application error" message. On the other hand if you dial your ISP and then load mozock.dll, no error should occur and the regular winsock.dll will be used. You always try to have one or the other loaded at any one time.

If mozock.dll has been loaded prior to running Cache Master, the software will detect it and the OPTIONS menu will reflect it as having been loaded. When Cache Master exits, it will try to unload mozock.dll from memory. If Netscape is running, it will not unload the DLL from memory.

This option is only available a supported browser has been defined.

# "INTERNET" Menu

[Quick HTML](#)

[Quick GIF HTML](#)

[Quick JPG HTML](#)

[Search](#)

## **Quick HTML**

This option allows you to quickly create an document from the database containing links to all HTML files that Cache Master knows about in its database. The HTML files links are written to a file and will be automatically sent to the browser for loading. The files selected are only the ones that came from the browser's cache directory.

This is a quick and easy way to view the files.

This option is only available a supported browser has been defined.



## **Quick GIF HTML**

This option allows you to quickly create an document from the database containing links to all GIF files that Cache Master knows about in its database. The GIF files links are written to a file and will be automatically sent to the browser for loading. The files selected are only the ones that came from the browser's cache directory.

This is a quick and easy way to view the files.

This option is only available a supported browser has been defined.

## **Quick JPG HTML**

This option allows you to quickly create an document from the database containing links to all JPEG files that Cache Master knows about in its database. The JPEG files links are written to a file and will be automatically sent to the browser for loading. The files selected are only the ones that came from the browser's cache directory.

This is a quick and easy way to view the files.

\*\*\*SPECIAL NOTE: If the Netscape Navigator application cannot be loaded, you will cause yourself some grief. The Quick HTML documents will automatically load the document into the browser. If the browser is not running, it will attempt to load it. If you are running off-line using MOZOCK.DLL as your winsock.dll, it should be fine. If you are trying to look at the Quick documents and you are not connected to the Internet (on-line), undesirable results will occur.

This option is only available a supported browser has been defined.

## Search

This option makes it easy to search the Internet for WEB sites, libraries, magazines, and even shareware software. Upon selecting this option, a panel will be displayed giving you several selections to choose from. Current interfaces include:

- ◆ Alta Vista
- ◆ CUI W3 Catalog
- ◆ Deja News
- ◆ Infoseek
- ◆ Inktomi
- ◆ Lycos
- ◆ Shareware.com (software search)
- ◆ Webcrawler
- ◆ Yahoo

To search for an item, you must first be connected to the Internet. This option does not work if you are running in an off-line environment. Enter the key word(s) you want to search, click on the desired search engine and then click on the "start" button.

# Short-Cut Keys

These key strokes can save you some effort. They provide an option to the mouse.


## **The following work on the Object List:**

<ENTER> will display the contents of an object item. If the highlighted object is a folder, the folder will flip between condensed and expanded.


^D (CONTROL-D) will perform a delete on the object item. If the "Quick Delete" option is set on, the item will automatically be deleted from the list.

^R (CONTROL-R) will run the item (if an application, ie. \*.exe). If the highlighted object item is not an executable program, it will be displayed as if you had pressed the <enter> key.


# The ICONS

Exit The Program: 

Select Current Or Add New Database: 

Process Internet Browser's Cache: 

Add Graphic Images To Object List: 

Netscape Browser: 

Use Local File With Internet Browser: 

Use Internet Address With Internet Browser: 


Select Current Or Add New Folder: 

Add New Object To List: 

Local Files: 


Turn Auto Capture On/Off: 

Remove Objects From List: 

Run Application: 

Search For Text: 

Create A New File: 

Paste To The Clipboard:  (Windows 3.x)

Erase The Contents Of The Clipboard:  (Windows 3.x)

**Exit The Program:** 

Pressing this icon will exit the program. Doing so will close the database and make necessary updates to the CM.INI file.

## Select Current Or Add New Database:



Cache Master operates with the presence of a database. A database must be selected before objects can be added to the object list in the main panel of the program. Cache Master databases have the ".osl" file type. Unregistered software will not allow you to change databases or create a new one.

**NOTE: A default database will be created any time the CM.INI has a blank entry for the database.**

## Process Internet Browser's Cache:

The amount of time needed to process the cache directory is directly related to the number of files in the browser's cache directory. Each time this icon is selected, the cache file database that Netscape keeps, has to be used to extract out the names of the cached files. The amount of time needed to process all of the cache files is relative to the size of the cache directory.

Starting with v2.1 (Windows 3.x) and v1.0 (Windows 95), cache files are processed by date and time. This allows only new files to be processed and added to Cache Master's database. Cache Master does not duplicate entries in the database or object list. As the files are processed, each cache entry is checked against the database for duplication. You will notice that the processing may slow down a bit and this is why.

If you are using a supported Internet browser, this icon will process the cache directory and add the files to the database. The browser will be closed prior to processing. This allows all files to be processed in 3 phases:

**Phase I** - Check for new cache files. The Internet URLs are being identified in the cache directory during this phase.

**Phase II** - Load the files into the database. If the duplicate cache option is set, files are copied from the browser's cache directory to Cache Master's download directory. Cache Master can determine new files that you have retrieved from the Internet and will refresh the document as well as inline images the next time this icon is selected.

**Phase III** - Rewrite the HTML documents and put the local file names in the file. This will replace the actual link in the document. This phase also updates the database with the HTML document changes.

If a document failed to load the correct picture images, revisit the HTML on the Internet and repeat this process. If you canceled the loading of a document and the graphic images didn't completely load, Cache Master will not display the graphics either. Cache Master will detect that the file is not available and will not be displayed. To correct this, reload the document from the source location and re-process the browser's cache.

This icon is only available a supported browser has been defined.



## Add Graphic Images To Object List:



If you are using a supported Internet browser, this icon will add graphic images to the object list from the database. This allows you to view the individual picture image files with the Internet browser or your favorite graphic viewing software.

You do not have to use this icon to view the graphic files that Cache Master knows about. Refer to the "Quick HTML" documents for quick viewing of GIF and JPEG file types.

**SUGGESTION:** Don't do this unless you need to. An alternative is to use the "Quick HTML" options. Loading all of the database's graphic file names will make the database larger. The amount of time necessary to add the graphic files names to the database is directly related to the size of the database.

This icon is only available a supported browser has been defined.

## **Netscape Browser:**



This icon symbolizes the Netscape Navigator software. Netscape is an Internet browser allowing you to interact with the World Wide Web (WWW).

### **Drag & Drop:**

1. The objects in the object list can be dropped onto the Netscape icon. When this is done, the local file name or the actual Internet address will be passed to the Netscape browser for loading.

### **Clicking On The Icon:**

2. Clicking on the icon will cause an entry to be added to the current folder. This entry will be the title of the document in the active window of the browser. The actual Internet address is also added to the content of the object.

This icon is only available a supported browser has been defined.

## **Use Local File With Internet Browser:**

This icon means that when objects are sent to the Internet browser, local file information will be used. Click on the icon and it will change to a globe which means that the real Internet address will be used.

## **Use Internet Address With Internet Browser:**



This icon means that when objects are sent to the Internet browser, the real Internet address will be used. Click on the icon and it will change to a computer which means that a local file will be used.

## Select Current Or Add New Folder:



Objects are placed into folders. A folder does not have to be added manually. Any feature in the program requiring a folder will automatically create a "default" folder if no folders exist. The demo version allows only a limited number of folders. Folders can be selected from a "pick" list. This causes the folder to be highlighted in the object list.

## **Add New Object To List:**



If you want to add a new object to the list, press the "plus" icon. You will be prompted to add the title for this object. If the title is blank, no object will be added. If a non-blank title is entered, the title will be added to the object list. The object content will have some miscellaneous text. Delete the text and type in your own.

## Local Files:



Local file names can be added to the object list or stored to a profile with this icon. Options allow you to add all files in a specific directory or sub-directories. Only the file names are added to the database not the contents of the file(s). If the object list is empty (no folders & no items) then a default folder will be created.

The window is broken down into three main areas: 1) Source, 2) Directory List, and 3) File List. First, the Source area is where the desired directories are defined and added to the Directory List. This is accomplished by using the drive and directory selection boxes. Select the desired disk drive from the drop down list and double click on the desired directory. When you want to add a directory, press the "Add To Directory List" button. If you want to add all the sub-directories for that directory, check the box to the right labeled "Look In Sub-Dirs". This action will add directories to the list in the box below the source area.

Once the directories have been added to the Directory List box, they are ready to be processed. There are a few things to check before they are added to the File List box.

- In the Source area there is a filter box. This box works the same as any other file filter box. Use the drop down list to select the file type or you may enter your own. This will be used to add only the files that match the filter.
- If there is a directory that you don't want processed, click on the directory and press the "Remove Directory(s)" button. The list can also be cleared, in order to start over with this process, by clicking on the "Clear List" button.
- To save the directory list for future processing, press the "Save Directory Profile" button. This will prompt you for a file name to store the list. The file type is ".DRF" (for directory list profile) and cannot be changed. The default directory is the Cache Master directory.

When you are satisfied with the directory list, press the "Add To File List" button. If you have checked the "Look In Sub-Dirs" box, any sub-directory found during processing will also be look in for files matching the file filter. If you have the "Add Volume ID" checked, then the disk drive volume will be added to the end of the file name.

- To save the file list for future processing, press the "Save File Profile" button. This will prompt you for a file name to store the list. The file type is ".FRF" (for file list profile) and cannot be changed. The default directory is the Cache Master directory.

Next, you are ready to add the files to the database or return to the main screen and select the file list by selecting the menu option "SETTINGS/DISPLAY FILE LIST". If you want to add file names to the database, two options are available: 1) Selected Files or 2) All Files. There are two items to the right labeled "Selected Files" and "All Files". Selected Files will only add the file names you have clicked on or highlighted. When you are ready, press the "Add Files To Database" button.

### **Loading Directory List Profiles:**

If you previously save a directory list profile, it can be reloaded. The profile contains all the desired directories and the file filter, sub-directory, and volume information. Selecting the "Load Directory Profile" button will prompt you for the location of the profile. The default directory is Cache Master directory.

### **Loading File List Profiles:**

If you previously save a file list profile, it can be reloaded. The profile contains all the names previously saved. Selecting the "Load File Profile" button will prompt you for the location of the profile. The default directory is Cache Master directory. The profile will check for the existence of every file in the profile. If it still resides on disk, it will be added to the list.



## **Turn Auto Capture On/Off:**



This icon is a toggle for turning the automatic clipboard copy feature on and off. If the auto copy is turned on, every time something is posted to the Window's clipboard, the object will be added to the current folder. If you have "Prompt for Title" selected, you will be prompted for the title of the object being added. Some features of the program turn auto-copy off when performing its function.

## **Remove Objects From List:**



This trash can icon will remove the currently selected object. If the selected object is a folder, all items in the folder will be removed. If the "Quick Delete" option is set, you will not be prompted to confirm the deletion.

Cache Master will only delete the files that it has copied. This means that all files copied to the default directory (C:\CM\DOWNLOAD) are subject to be deleted by Cache Master.

## Run Application:



Associated applications can be run based on the object selected. The short-cut key, ^R, can also be used to run an application for the object. Cache Master will attempt to find the executable or program designated to load the file type of the selected object. For example, if the object is a Window's help file (clipbrd.hlp) and this icon is pressed, then WINHELP.EXE starts running and will load CLIPBRD.HLP.

**Graphic Files** - If the selected object is a graphic file (gif, jpg, etc.) it can be viewed with your favorite graphic viewing software. This can be done by selecting the proper software from the "FILE/Select Graphics" menu option. The file is considered graphic if it has one of the following file types:

- |                                  |                                    |
|----------------------------------|------------------------------------|
| 1. BMP - OS/2 or Windows Bitmap  | 12. MAC - MacPaint                 |
| 2. CLP - Windows Clipboard       | 13. MSP - Microsoft Paint          |
| 3. CUT - Dr. Halo                | 14. PCD - Kodak Photo CD           |
| 4. DIB - OS/2 or Windows DIB     | 15. PCX - Zsoft Paintbrush         |
| 5. GIF - Compuserve              | 16. PIC - PC Paint                 |
| 6. IFF - Amiga                   | 17. RAS - SUN Raster Images        |
| 7. IMG - GEM Paint               | 18. RLE - Compuserve or Windows    |
| 8. JAS - JASC                    | 19. TGA - Truevision Targa         |
| 9. JIF - JPEG or JFIF Compliant  | 20. TIF - Tagged Image File Format |
| 10. JPG - JPEG or JFIF Compliant | 21. WMF - Windows Meta File        |
| 11. LBM - Deluxe Paint           | 22. WPG - WordPerfect              |

**Other Files** - If the selected object is a file, the file type will be looked up and loaded based upon the file type of the object. If the object contains nothing more than text, then the same display will appear that occurs when the object is double clicked. If the object is a real file and no association has been made, load file manager and associate the file type with an application. Then you will be able to load the application and pass the object to it.

## Search For Text:



Text can be searched for in the object list, file content, file names, object information, and Internet addresses. There are two ways to pinpoint the search string: search criteria and case sensitivity.

### **Search Criteria - 4 options:**

1. Text In Object List - searches the object list
2. Text In Files - opens every file matching the file type selected looking for the search string. Once a match has been made, the search for that particular file is finished and the next file is used.
3. Text In Object Content - searches the object's information area for the search string.
4. Internet URL Address - searches the Internet addresses for the search string.

### **Case Sensitive - 4 Options:**

1. Mixed Case - looks through the objects looking for the search string in any combination.
2. Upper Case Only - looks through the objects looking for the search string in upper case.
3. Lower Case Only - looks through the objects looking for the search string in lower case.
4. Exact - looks through the objects looking for the search string exactly the way its typed into the Search String area.

**Some options will not be available if the "Settings/Display File List" option is selected.**

## **Create A New File:**



A new file can be created from a selected object (other than a folder). If the object is already a file, you will be prompted for the new file name. If the object's content is just text, it too can be saved into a new file. The new file will only be created and not added to the database with this icon.

## **Paste To The Clipboard:** **(Windows 3.x)**

The content of the selected objects can be posted to the clipboard. This is useful for non-supported Internet browsers. Post the Internet address to the clipboard and then copy the information to your browser. Only the object's content can be copied to the clipboard.

**Erase The Contents Of The Clipboard:**



**(Windows 3.x)**

This icon simply erases the clipboard.

## Known Problems

PROBLEM: Netscape causes "out of system resources" to display.

FIX: Change Netscape to load a blank page upon execution. Check OPTIONS/PREFERENCES/STYLE or OPTIONS/GENERAL depending upon the version of Netscape you have.

### *Windows 3.x*

PROBLEM: "OBJECT VARIABLE NOT SET" - This error occurs because SHARE.EXE is not loaded. It will appear as soon as you try to use any function that accesses the Cache Master database.

FIX: Exit Windows. Edit your autoexec.bat file and add a line to load SHARE.EXE. Reboot your machine or simply run SHARE.EXE manually. Reload Windows and try running Cache Master again. SHARE.EXE will most likely be found in your DOS or Windows directory.

PROBLEM: Strange black and white icons. This is a problem that appears when you use the "drag and drop" function to send the Internet browser a file or address to load. It has to do with font sizes.

FIX: Change from large to small fonts.

### *Windows 95*

Please email any bugs you experience to us at [osl@neosoft.com](mailto:osl@neosoft.com).



## Downloading The Software

Cache Master is available from the following sources:

- <http://www.neosoft.com/~osl/> (always the most current version available)
- CompuServe: "cm.zip" (Windows 3.x) or "cm95.zip" (Windows 95).

Visit the following forums on CompuServe for copies of the software:

- 1. WINUTIL
- 2. WINSHARE

# How To Register The Program

Cache Master is shareware, not freeware. The software is licensed for evaluation purposes only. After 30 days, we ask that you register the software or discontinue its use.

Prices as of January 1, 1996:

Purchase Price: \$20.00

Shipping/Handling: \$1.50 (US), \$2.00 (Canada/Mexico), \$6.00 (other)

Printed Manual: \$10.00 (this help file in printed form)

Prices are subject to change without notice. Contact Off-Site Labs for the current price by email at [osl@neosoft.com](mailto:osl@neosoft.com). Texas residents will need to add 8.25%.

After payment is received, you will receive a registration code by one of the following methods: 1) e-mail, 2) postal mail.

## **THE INFORMATION BELOW IS FOR CREDIT CARD ORDERS ONLY!**

**PsL Reference #14281 (Windows 3.x)**

**Windows 95 Beta Version Not Available For Registration At The Current Time!**

You can order by credit card from PsL by any of the following:

- Calling 800-2424-PsL or 713-524-6394 from 7a.m.-6p.m., Mon.-Thurs. 7a.m.-Noon Friday
- FAX 713-524-6398
- Email to [71355.470@compuserve.com](mailto:71355.470@compuserve.com)
- Mail credit card orders to PsL at P.O. Box 35705, Houston, TX 77235

## **USE THE FOLLOWING TO REGISTER ON COMPUERVE:**

**Registration ID: #8608 (Windows 3.x)**

**Windows 95 Beta Version Not Available For Registration At The Current Time!**

For Compuserve users, there is a shareware registration section (GO SWREG) to make it easy for you to purchase the software. The registration amount will added to your Compuserve account balance.

Registration information

### **ON-LINE Registration**

If you have a credit card and would like to register Cache Master online, you can visit our WEB site and select the "On-Line Registration" link. This link will take you to a form for you to supply your credit card and personal information.

## **FOR PRODUCT SUPPORT, CONTACT:**

### **Off-Site Labs**

P.O. Box 536

Barker, TX 77413

email: [osl@neosoft.com](mailto:osl@neosoft.com)

www: <http://www.neosoft.com/~osl>



# LICENSE AGREEMENT

This license agreement permits an evaluation period not to exceed 30 calendar days. After such time, registration is requested.

## Disclaimer

**Off-Site Labs** reserves the right to make modifications at any time to the software and/or the documentation without approval or notification. The software described in this document is provided under the software license and may be used under accordance with such license. By using the software you, the user, implicitly agrees to the conditions and rules stated in the License agreement.

Except as expressly provided, **Off-Site Labs**, makes no warranties, either express or implied, with respect to the software to provide a particular function. The software is licensed solely on an "AS IS" basis. In no event shall **Off-Site Labs** be liable for any damages whatsoever (including, without limitation, damages for loss of business profits, business interruption, loss of business information, or other pecuniary loss) arising out of the use of the software.

## License Agreement:

The term "REGISTERED version" identifies all versions of the software defined in this document. The software defined in this document is being distributed as a SHAREWARE version. The term "SHAREWARE version" means that the defined software may be freely uploaded to FTP sites, Usenet newsgroups, bulletin board systems, and other such sites for distribution providing its users download the software for trial purposes.

SHAREWARE versions of the software defined in this document shall not be distributed in CD-ROM disks or any other media without express authorization of the author. CD-ROM distribution is granted to any institution or organization where the SHAREWARE version is uploaded by the authorizing agent, Off-Site Labs.

Single User License: Off-Site Labs grants you a single user, registered license for use on a single computer. Installation of the software on a network is prohibited for this type of license.

Site license: These license is granted for a limited number of copies to an institution or organization. Contact Off-Site Labs for more information.

The software product and the documentation is supplied as copyrighted material and contain proprietary information. All rights are reserved. The software and documentation is protected under Copyright Law of the United States of America.

Windows and Windows 95 are registered trademarks of Microsoft Corporation. Netscape Communications, the Netscape Communications logo, Netscape, Netsite and Mozilla are trademarks of Netscape Communications Corporation. All other products, brand, or trade names used in this documentation are the trademarks of their respective trademark owners.

